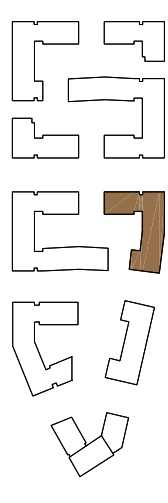
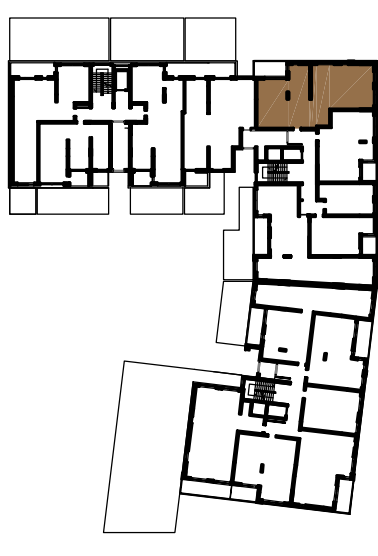
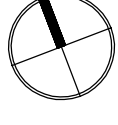





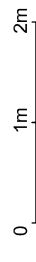
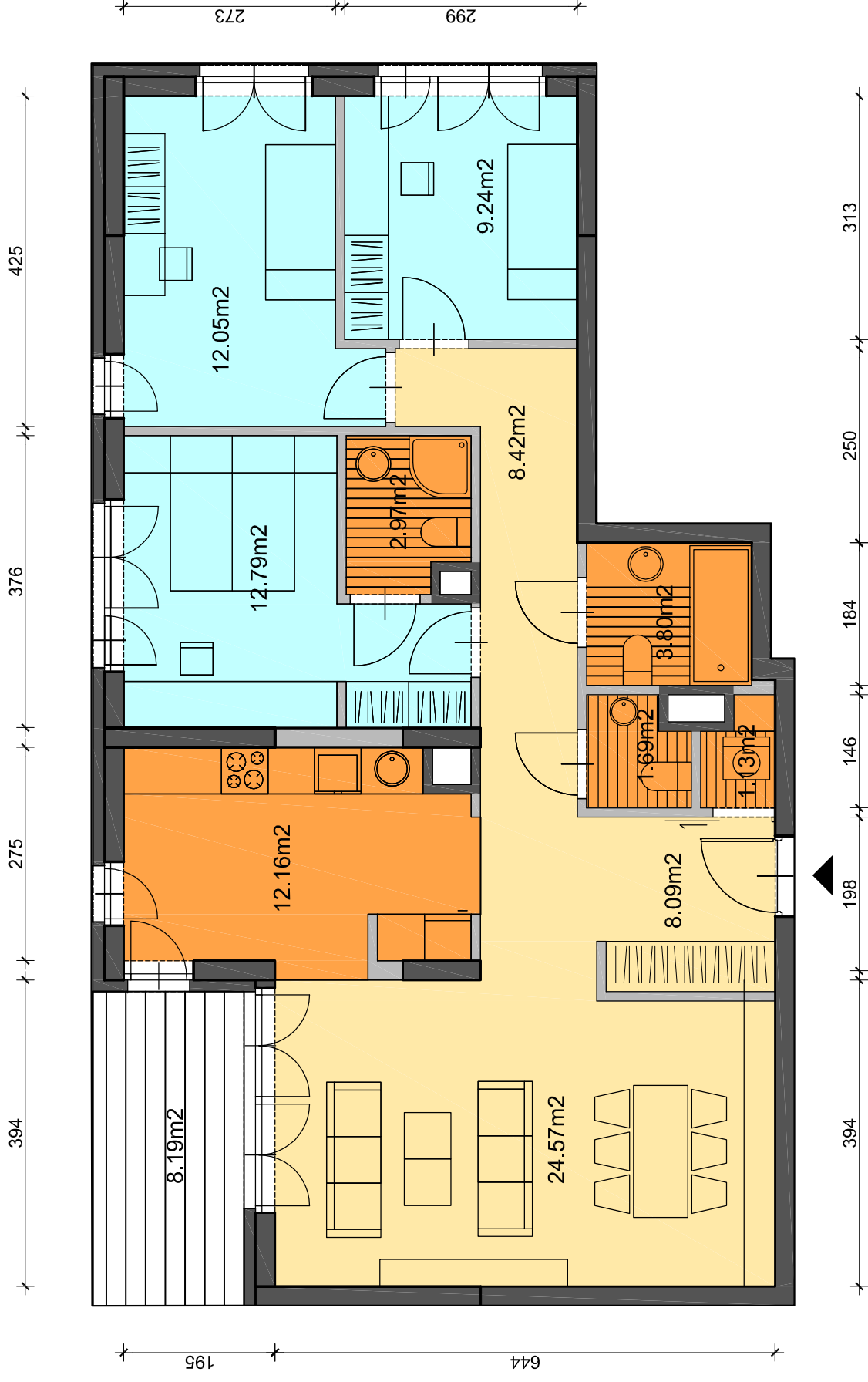


ILOŚĆ POKOI 4
 POWIERZCHNIA 96,91 m²
 PARTER
 LOKAL NR 30



	ŚCIANY NIEROZBIERALNE
	ŚCIANY ROZBIERALNE
	SYPIALNIE
	PRZESTRZEŃ WIELOFUNKCYJNA
	KUCHNIE, ŁAZIENKI, PRALNIE



UWAGI : 1) POWIERZCHNIE POMIESZCZEŃ ZGODNIE Z POLSKĄ NORMĄ PN-ISO 9836
 2) WYMIARY POMIESZCZEŃ PODANE W STANIE WYKOŃCZONYM